

Adaptation to Climate Change Including Societal Transformation Mission

Prepare Europe for climate disruptions and accelerate the transformation to a climate resilient and just Europe by 2030

Zbigniew W. Kundzewicz

Członek Mission Assembly for Adaptation to Climate Change, including Societal Transformation

Misja: Connie Hedegaard (przewodn.), Mathieu Cornieti, Helena Freitas, Mirela Holy, Daniela Jacob, Virginia Murray, Jaroslav Mysiak, Kevin O'Connor, Hein Pieper, Johan Rockström, Ann Runnel, Mark Scicluna Bartoli, Asuncion Lera St. Clair, Per Espen Stoknes, Jean-Pascal van Ypersele

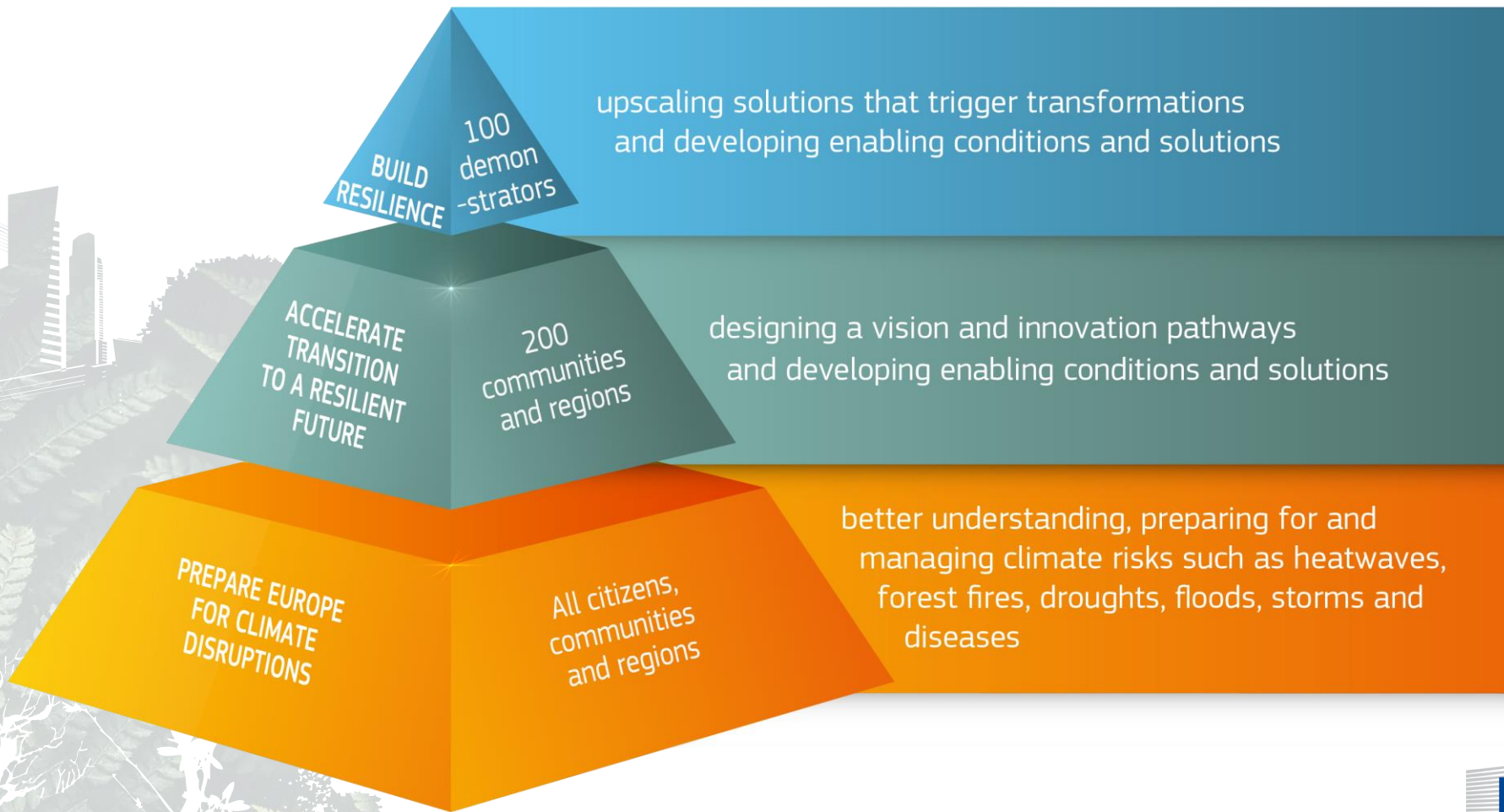
Zgromadzenie: Olivier de Schutter, Jo Deketelaere, Sandrine Dixson-Decleve, Kristin Halvorsen, Mikael Hilden, Catherine Howarth, Richard Klein, **Zbigniew Kundzewicz**, Valerie Masson-Delmotte, Veruska Muccione, **Piotr Mysiak**, Antonio Navarra, Jean-Pol Poncelet, Johan Schot, Frank Schweikert, Elio Sucena, Bernadette Sütterlin, David Tabara, Reetta Toivanen, Sybille van den Hove, Susana Viegas, Dickie Whitaker

Vision

ACCELERATING THE TRANSFORMATION TO A CLIMATE PREPARED AND RESILIENT EUROPE

Turning the urgent challenge of adapting to climate change into an opportunity to make Europe more climate prepared, resilient and just

Objectives



A broad view of resilience

- **Climate resilience** understood to include:
 - **resilience of environmental systems** → with a commitment to long-term sustainability and the *precautionary* and *do no harm* principles.
 - **resilience of social and economic systems** → with a commitment to equity, social and gender justice, to engage children and youth, and to leave no one behind.
 - **resilience of political systems** → with a commitment to inclusiveness, deliberation, shared values, solidarity and respect for diversity.

Approach

- **Citizens and stakeholder engagement** and support partner regions and communities to:
 - **Co-design** → build their own visions of climate resilience and adaptation, co-design climate-resilient adaptation pathways, and sign a climate resilience contract
 - **Co-implementation** → foster co-production of data and knowledge and co-design of climate services and innovative solutions, employ citizen science, citizen observatories, establish and operate living Mission Labs
 - **Co-evaluation** → provide feedback on whether whether results have been accomplished, lessons learned to feed back to policy review and agenda setting at the European, national and local scales

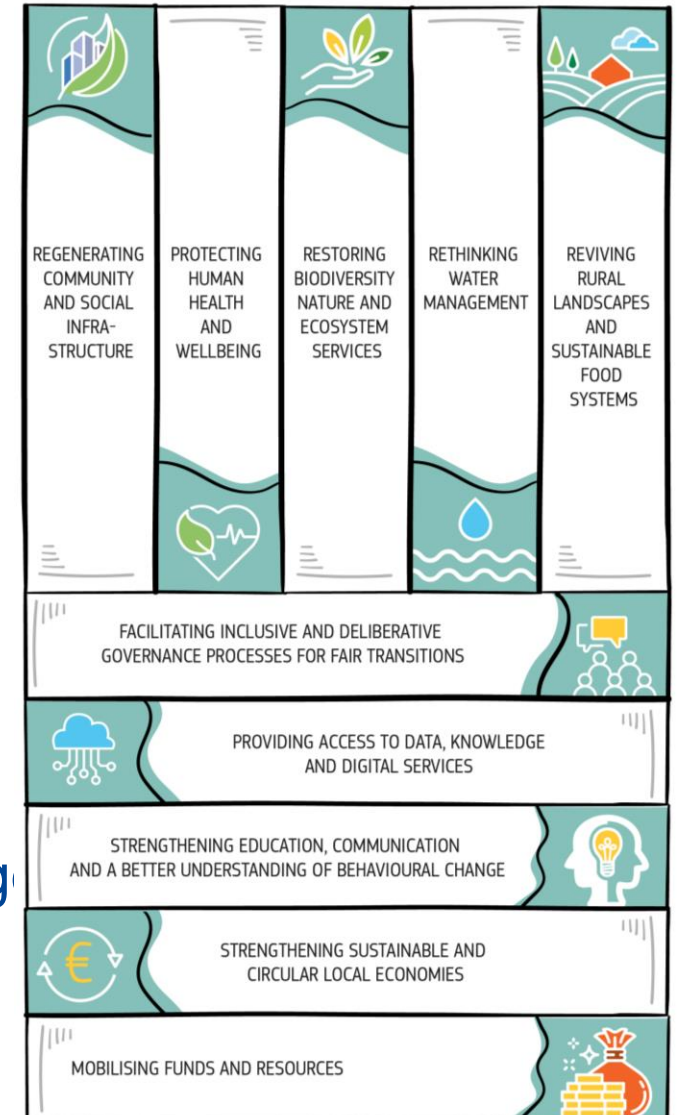
Areas of innovation

Transforming community systems:

- Regenerating community and social infrastructure
- Protecting human health and wellbeing
- Restoring nature and ecosystem services
- Rethinking water management
- Reviving rural landscapes and sustainable food systems

Creating enabling conditions:

- Providing data, knowledge and digital services
- Facilitating inclusive and deliberative governance
- Improving education and understanding of behavioural change
- Strengthening sustainable and circular local economies
- Mobilising funds and resources



Implementation

- **Implementation Phases:**
 - **Co-creation of a place-based vision for climate resilience and transformative pathways to get there (1st and 2nd years)**
 - **Co-development and testing of transformative solutions to accelerate the transformation (portfolio of R&I actions; as of 2nd year to end of mission)**
 - **Co-deployment of solutions at larger scale building climate resilience in demonstrators (as of 3rd year to end of mission)**

Implementation

- **Selection process and criteria (work in progress):**
 - as flexible, inclusive and supportive as possible
 - a good representation of climate impact scenarios across Europe
 - focus on the more vulnerable as well as a good mix of performance / adaptive capacity
 - level of commitment of regions/communities to support transformation to climate resilience



Added value of the Mission

- The Mission seeks to **mobilise and accelerate research and innovation in a systemic way**, integrating it with citizen engagement, green financing and policy reforms to **test and deploy innovative solutions at a scale and magnitude of impact that could not be otherwise achieved**.
- As adaptation challenges are often local and specific, the Mission will focus on the development of **solutions at the local level**, addressing and taking into account the challenges and needs of citizens.
- The Mission has been **co-designed** together with the **new EU Adaptation Strategy** and will fully contribute to its objectives.



Proposed Mission: **A Climate Resilient Europe**

Prepare Europe for climate disruptions and
accelerate the transformation to a climate
resilient and just Europe by 2030

Report of the Mission Board for
Adaptation to Climate Change,
including Societal Transformation

Independent
Expert
Report



Research and
Innovation

Dziękuję
za uwagę

kundzewicz@yahoo.com



RTD-HORIZON-EUROPE-MISSION-ADAPTATION@ec.europa.eu